

**United
Way**



TM

**United Way
of the Laurel Highlands**
Serving Cambria & Somerset Counties

***LEADING
CHANGE
IN OUR COMMUNITY***

2022

**ANNUAL
REPORT**



Get to know our work: UWLaurel.org



United Way
of the Laurel Highlands
Serving Cambria & Somerset Counties

To live better, we must live united



WHO WE ARE

The United Way of the Laurel Highlands is a volunteer-driven, community-leading organization, responsible for creating, expanding, and accelerating positive social change in Cambria and Somerset Counties. We have been strengthening the spirit of human helpfulness since 1930. Our mission is to improve lives by mobilizing the caring power of our community. Together, we build healthy neighborhoods.

WHAT WE DO

The United Way of the Laurel Highlands is strategically focused on funding evidence-based programs and impactful services aimed at three core initiatives:

- Early Childhood Development
- Parental Engagement
- Youth Drug & Alcohol Prevention

These community needs have been identified by several community-wide needs assessments, which were performed in partnership with Conemaugh Health System, the 1889 Jefferson Center for Population Health, and the 1889 Foundation. In addition, we continue to support basic human needs. Recently, we started a community diaper bank and a SNAP at the Market program as part of our effort to improve the economic stability and health of the community.

HOW WE WORK

The United Way of the Laurel Highlands uses an Enhanced Community Impact Model (ECIM) [®].

Enhanced Community Impact Model [®]

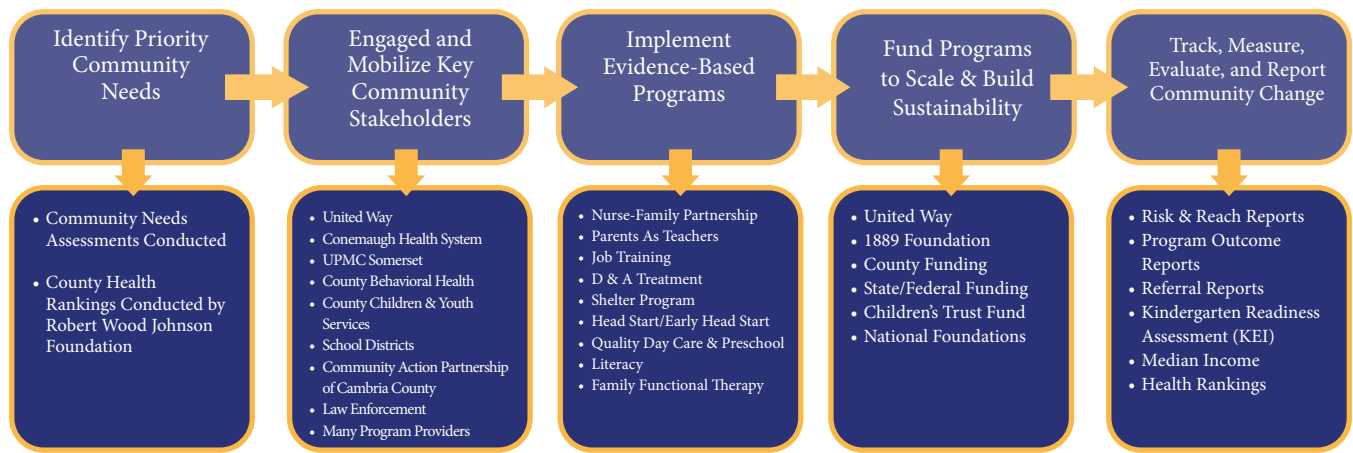
The Enhanced Community Impact Model (ECIM) is the foundation of “how” the United Way of the Laurel Highlands implements, sustains, and creates lasting social change across a two-county service area. This model follows collective-impact strategies focused on building collaborative efforts to address priority community needs. Throughout the process, progress is tracked, measured, evaluated, and reported.



EARLY CHILDHOOD DEVELOPMENT & PARENTAL ENGAGEMENT INITIATIVE

United Way of the Laurel Highlands has been dedicated to developing strategies, opportunities, and collaborations that strengthen our youngest learners. Using a whole-child approach, we seek to make investments that support children’s health, learning, nutrition, economic security and safety. We know that bright futures happen when we empower children and families.

Building a Civic Infrastructure for Early Childhood

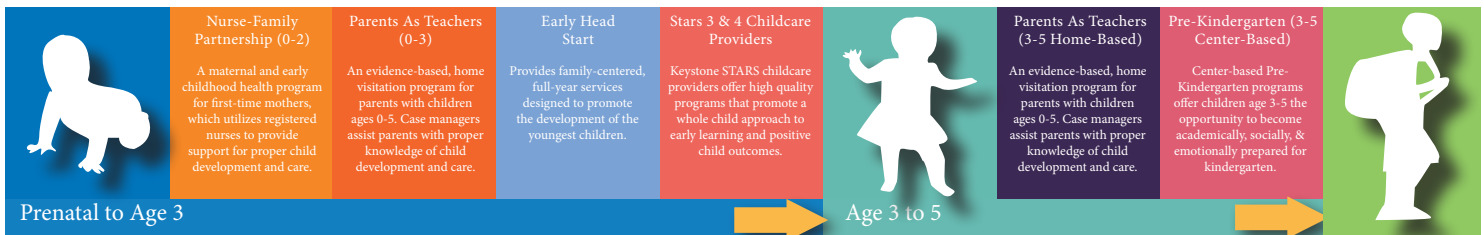


Designing & Implementing a Resource Model - Parental Pathways to Success

The United Way of the Laurel Highlands, in partnership with multiple early learning providers, school districts, and agencies, has built the **Parental Pathway to Success**. This linear model guides parents and their children through specific programs and services available within the community that assist, strengthen, and support healthy family development, promote resiliency, and create sustainable self-sufficiency.

The model accomplishes three main goals:

1. Maintain continued year-to-year support and assistance for at-risk families needing aid via family and personal development.
2. Provide a continuum of care for both parents and their children, leading up to the child entering our school systems.
3. Increase parental knowledge of child development and care, while preparing all children socially, emotionally, and academically for kindergarten.



Implementation, Funding, and Outcomes

Following the Enhanced Community Impact Model[®], the United Way of the Laurel Highlands funds both the **Nurse-Family Partnership** and **Parents as Teachers** programs at sustainable levels in both Cambria and Somerset Counties through annual fundraising, grant procurement, state and federal funding, and continued foundation support. Over the past eight years, the implementation and scaling of these programs have led to the following results in both Cambria and Somerset Counties.



441

Families Served Annually



98%

Up-to-date Immunizations



100%

Referred to Annual Development Screening



100%

Referred Developmental Delays

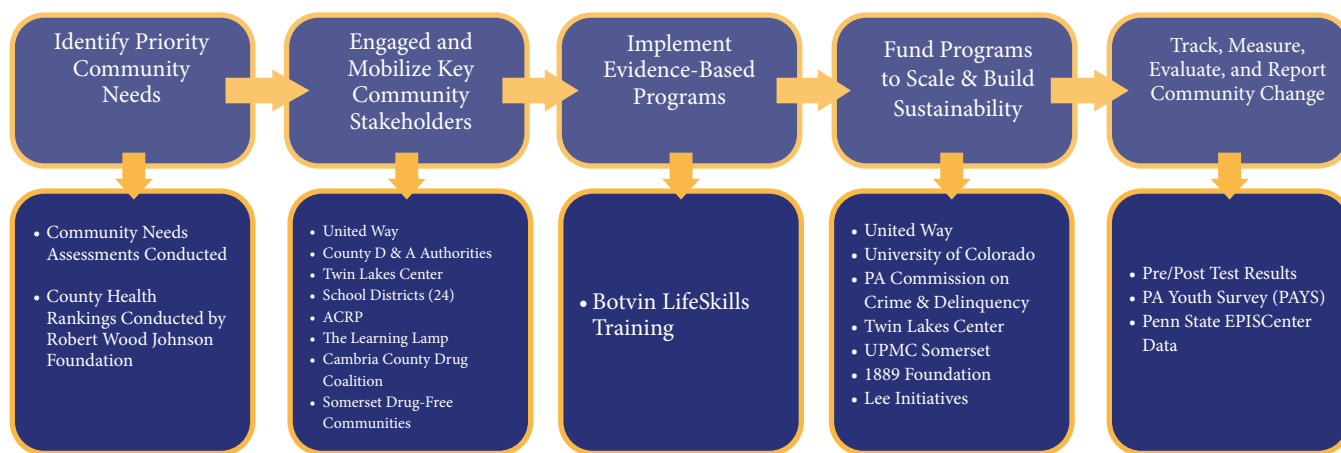
YOUTH DRUG & ALCOHOL PREVENTION INITIATIVE

Youth Drug & Alcohol Prevention

The United Way of the Laurel Highlands is committed to providing youth drug and alcohol prevention programming in all school districts in both Cambria and Somerset Counties. In 2011, the UWLH Board of Directors made the decision to fund the growth and expansion of the nation's top prevention program, Botvin LifeSkills Training, in four predetermined school districts across both Cambria and Somerset, reaching approximately 160 students.

During the last 12 years, the work of the UWLH, along with many key community stakeholders, including each county's Single County Authority, Twin Lakes Center, Cambria County Drug Coalition, Somerset Drug-Free Communities, the Pennsylvania Commission on Crime and Delinquency, University of Colorado, 30 school districts, and providers of Youth Drug & Alcohol Prevention programming have made significant a impact within the region. Botvin is now being taught to 7,200 students each year.

Implementing the Enhanced Community Impact Model to Create Social Change



PRESCHOOL & AFTERSCHOOL PROGRAMMING

Preschool & Afterschool Programming

At the United Way, we continue fund high quality preschool and afterschool programming within our community. Investment in these programs helps children to develop socially and emotionally, and contributes to academic success. Through our Partner Agencies, children continue to receive the care they need to learn, grow and thrive.

Preschool Programming - Partner Agencies & Impact

- **The Learning Lamp** - Funded in the amount of \$8,000 in 2022-2023 to provide preschool scholarships to children, The Learning Lamp was able to positively affect the lives of eight deserving preschoolers in Cambria County.
- **Small Town Hope** - Funded in the amount of \$24,000 in 2022-2023 to provide preschool programming to children in the Northern areas of Cambria County, Small Town Hope continues to provide high-quality learning experiences to 20 students.

Afterschool Programming - Partner Agencies & Impact

- **Flood City Youth Academy** - Funded in the amount of \$20,000 in 2022-2023 to provide their afterschool tutoring and mentoring program to, on average, 170 students each weekday. Each student also receives a meal.
- **Boys & Girls Club of Somerset County (BGC)** - Funded in the amount of \$10,000 in 2022-2023 the Boys & Girls Club of Somerset County's "Power Hour" program has become a community asset for advancing student learning in grades K-5. Funding from the UWLH gives BGC the ability to secure volunteers to assist students with one-on-one tutoring.

BASIC HUMAN NEEDS INITIATIVE

Supporting Basic Human Needs

The Cambria and Somerset County region is a wonderful place to live, work, and grow. For individuals and families needing assistance, the community has a vast array of safety net services to assist those who are experiencing difficulties. Our United Way invests in basic human needs by funding the work and programs of our dedicated Partner Agencies. These programs commonly provide the vital resources and assistance that most individuals use to avoid crisis situations.

Through their work, these Partner Agencies enable the United Way to reach and impact the lives of more than 58,000 individuals each year. Programs within this initiative area span across the following seven platforms:

HUNGER, HOMELESSNESS

SUPPORTING MENTAL AND PHYSICAL HEALTH

UTILITY ASSISTANCE, SAFETY, AND EMERGENCY SHELTER

As the amount of need continues to grow within our community, the United Way of the Laurel Highlands remains strategically invested in the development of collaborative approaches centered on reducing the challenges faced by individuals and families who are the most susceptible within the areas shown above. Below we have listed the funded agency, funding level, supported basic human needs, and impact that is being made within the community from the 2021-2022 United Way allocations.



Hunger

The United Way of the Laurel Highlands is the lead administrator of the Pennsylvania Department of Agriculture Grant for Cambria County. During the course of the 2021-2022 grant funding cycle, \$215,905 was allocated to 20 local food pantries and meal centers via the PA Department of Agriculture grant, serving approximately 78,545 individuals requiring food assistance.



Homelessness

Addressing the issue of homelessness in Cambria and Somerset Counties has quickly become a priority area for our United Way. To address this growing need, we invest funding in two separate shelters within our region — \$15,000 to the Martha and Mary House, operated by Catholic Charities in Cambria, and \$10,000 to the Next Step Center in Somerset. Combined, these agencies serve more than 130 individuals annually.



Mental Health

Supporting Mental Health programs is important to sustaining the health and well-being of our community. In doing so, our United Way invested \$15,000 in funding to the Peer Empowerment Network, which annually sees more than 1,400 individuals within Cambria County.



Emergency Utility Assistance

We support the needs of many individuals through funding Emergency Utility Assistance programs in both Cambria and Somerset Counties. In Cambria, Catholic Charities receives \$14,000 annually to provide emergency financial assistance to individuals seeking vital support. In Somerset, \$3,500 is allocated to The Salvation Army — Somerset to provide heating assistance to families.



Medical Assistance

The work of Highlands Health is an important asset for providing much-needed healthcare in Cambria and Somerset Counties. In 2022-2023, Highlands Health received \$32,500 to provide medical assistance to 1,050 individuals in our two-county region. Highlands Health administered 1,749 COVID-19 vaccines.



Direct Victims of Crime and Domestic Abuse

Addressing direct victims of crime and domestic abuse within our community is a focus at the United Way of the Laurel Highlands. We are very grateful to have two Partner Agencies who continue to make a positive impact each year. Victim Services, Inc. received \$42,000 to provide direct support to individuals escaping domestic violence/abuse situations, and the Women's Help Center received \$4,200 to provide emergency shelter to women and children.

USDA GRANT / SNAP AT THE MARKET

United States Department of Agriculture Grant

The United Way of the Laurel Highlands is part of a group of organizations leveraging a portion of \$10 million in federal funding to help feed people in the Laurel Highlands.

The United States Department of Agriculture has released details on the funding program, made possible through the American Rescue Plan Act.

The program is intended to “bolster USDA’s food and nutrition security efforts by promoting the self-reliance of communities in providing for the unique food needs of their community members,” according to the agency.

United Way is receiving a grant totaling more than \$280,000 for a variety of projects toward that goal. Collaborators in the work include the 1889 Jefferson Center for Population Health, the 1889 Foundation, The Greater Pittsburgh Community Food Bank, Sandyvale Memorial Gardens and Conservancy, Flood City Youth Fitness Academy, Cambria County Backpack Project, Trinity Farms Center for Healing, Benschoff Farms, St. Vincent de Paul Food

Bank and Vision Together 2025.

Each project meets a food security initiative that is important to the USDA and the local organizations involved, including increasing access to local, healthy foods; expanding the capacity of the Local Foods, Local Places program; food-related education for low-income residents; among others.

“This Community Food Projects grant through the USDA National Institute for Agriculture is an opportunity to strengthen food security through a systems-based approach to sourcing, growing, storing, and educating people about food. It’s an ambitious plan to reduce hunger by 2% in the Greater Johnstown region,” Karen Struble Myers, United Way of the Laurel Highlands, President & CEO, said.

Late last summer, the United Way worked with some of the organizations noted above to pilot SNAP at the Market, which made Supplemental Nutrition Assistance Program (formerly called food stamps) benefits useable at the Downtown Johnstown Farmers Market. The result

was nearly \$10,000 in benefits spent on fresh, local produce by about 30 families each week.

In the state, more than 1.1 million people face hunger and nearly 350,000 of them are children, according to statistics provided by the USDA through Feeding America.

“The childhood food insecurity rate in Cambria County is nearly 3% higher than the national average at 19%. We’re taking a holistic approach to addressing that need,” Struble Myers said.

As part of the grant project, results will regularly be reported out and a plan for self-sustainability has been developed.

“Community food projects are already making a tremendous impact throughout the nation by increasing access and consumption of nutritious local foods, enhancing workforce development and supporting entrepreneurship,” USDA National Institute of Food and Agriculture acting Director Dionne Toombs said.

SNAP at the Market

A pilot program in coordination with other partners made SNAP benefits useable at the Downtown Johnstown Farmer’s Market from August to October.

United Way worked with the United States Department of Agriculture to acquire the necessary technology and to become the qualified agency responsible for processing SNAP benefits. Community volunteers are trained to help work the market each Friday during the season.

About 30 families participated each week, spending more than \$9,700 on fresh, local produce.



Greater Johnstown Career & Technology Center students made tokens that were used to help document spending at SNAP at the Market.



CLICK HERE TO HEAR FROM A PERSON WHO PARTICIPATED IN THE MARKET.

COMMUNITY IMPACT PROCESS

Community Impact - Funding Partner Agency Programs & Services

The impact of the United Way of the Laurel Highlands would not be possible without the hard work and dedication of our 24 Partner Agencies that deliver programs and services to the community. Decisions on appropriate levels of funding allocated to these Partner Agencies is completed through the Community Impact Process. This process is completely driven by volunteers, and ultimately helps to determine what programs will be funded based upon the applications they evaluated.

To receive funding from the UWLH, a Partner Agency must go through the Request for Proposal Process. Many partner agencies have long-term relationships with the UWLH, and continue to illustrate their impact to the community based upon an annual assessment, which is done via the Community Impact Process.

Non-UWLH Partner Agencies must respond to a Request for Information (RFI) put forth by the UWLH in order to submit an Request for Proposal (RFP). RFI's are not published annually, and are done so if the need to expand an area of impact is presented.

The Overall Process:

The Community Impact Committee, which is comprised of civic-minded leaders, United Way board members, and United Way volunteers, oversees two Community Impact Panels. These panels are separated based upon two definitions of need within the community aligned with the focus areas of the UWLH:

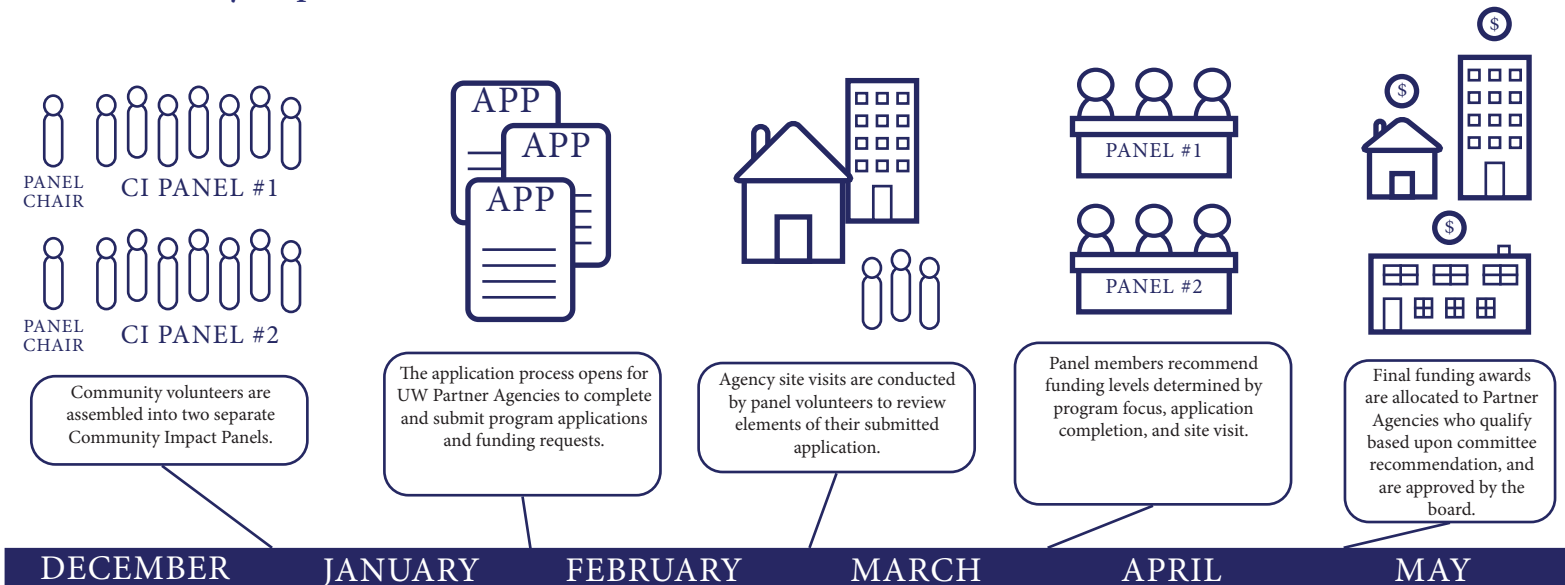
PANEL #1 - Helping Children & Youth Succeed

The HCYS Panel is focused on evaluating Partner Agency programming for our youngest community members. Volunteers who comprise this panel will evaluate programs focused on pre-birth to school-aged youth.

PANEL #2 - Strengthening & Supporting Families, Supporting the Vulnerable & Aging, Promoting Self-Sufficiency, and Promoting Health & Wellness

This Panel is focused on evaluating Partner Agency programs which strengthen families, promote health and wellness, support the vulnerable and aging, or promote self-sufficiency. Volunteers on this panel also review programs focused on basic human needs within our community.

Community Impact Process & Timeline



GRANT WRITING

Grant Writing Initiative

Beginning in 2016, the United Way's Grant Writing Initiative was developed to support grant procurement for both United Way initiatives and community-based collaborations. During the last 7 years, Travis Hutzell, the United Way's Grant and Resource Development Director, has helped secure more than \$12.8 million in grant funding, which has largely benefited vital community-based efforts in both Cambria and Somerset Counties. The following table illustrates the progress that has been made throughout the course of the 2021-2022 grant writing cycle. *(Note: Does not reflect outstanding grant applications that may be awarded by the end of the fiscal year.)* [CLICK HERE FOR GOOD NEWS ON A GRANT.](#)

Grant Received	Grant Recipient	Annual Award Amount	County Supported	Duration
Safe Families & Communities	Victim Services	\$302,931	Cambria/Somerset	3 Years
CFA Special Funding	Flood City Youth Academy	\$150,000	Cambria/Somerset	1 Year
United Way PA COVID Live Cycle 1	United Way	\$69,047	Somerset	1 Year
United Way PA COVID Live Cycle 2	United Way	\$160,000	Cambria/Somerset	1 Year
City of Johnstown ARPA	United Way	\$156,927	Cambria	1 Year
PDE 21st Century Community Learning Center	Flood City Youth Academy	\$1,800,000	Cambria	5 Years
PCCD-JAG-Crisis Intervention Team	United Way	\$255,000	Bedford/Cambria/Somerset	2 years
OCDEL Family Center RFA	Family Center	\$325,000	Somerset	1 Year
Drug-Free Communities Reapplication	Cambria County Drug Coalition	\$125,000	Cambria	5 Years
City of Johnstown ARPA	Flood City Youth Academy	\$50,000	Cambria	1 Year
USDA Community Food Program	United Way	\$280,801	Cambria	4 Years
NISource Charitable Foundation	United Way	\$3,000	Somerset	1 Year
PCCD-Re-entry Planning	Somerset County	\$15,000	Somerset	1 Year
PCCD-CIT Training Grant	Somerset Borough	\$20,000	Bedford/Cambria/Somerset	1 Year
Community Foundation/ECE Fund	Discovery Kids Childcare Center	\$30,000	Cambria/Somerset	1 Year
Land O' Lakes	United Way	\$1,000	Cambria	1 Year

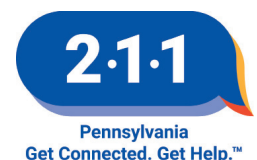
\$3,743,706

PA 211

PA 211 Helpline

PA 211 is non-emergency helpline dedicated to connecting individuals who are in need of health and human services with local information and resources that can help assist them during their time of need. PA 211 is available to all residents in Cambria and Somerset Counties free of charge, and is available 24/7, 365 days a year. Annually, PA 211 receives more than 1,700 total contacts from Cambria and Somerset County residents seeking help for health and human services related to:

- Utility Assistance
- Rent Assistance
- Medical Assistance
- Drug & Alcohol Support or Treatment
- Mortgage Assistance
- Employment Assistance
- Transportation Assistance
- Food Assistance



REVENUE & EXPENSES

Top ratings for efficiency and transparency

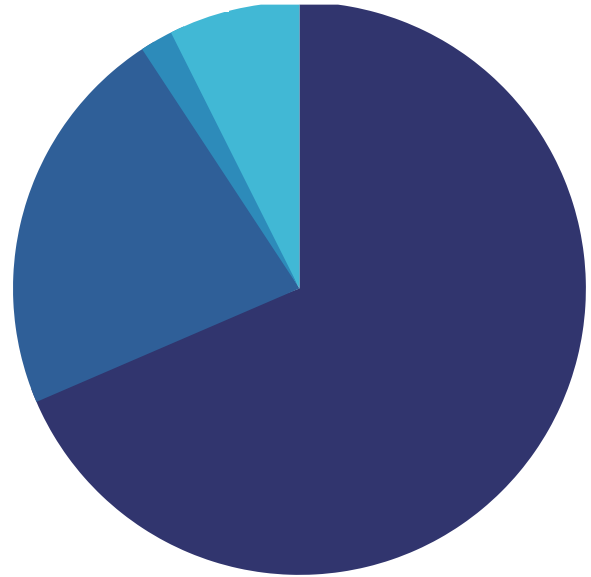


Revenue & Expenses - 2021-2022 Fiscal Year

United Way adheres to best practices in non-profit management, applying consistent, effective, internal controls and strong governance to ensure accountability and transparency. Revenue and expense information reflects audited totals from the Fiscal Year - July 1, 2021 to June 30, 2022.

Revenues:

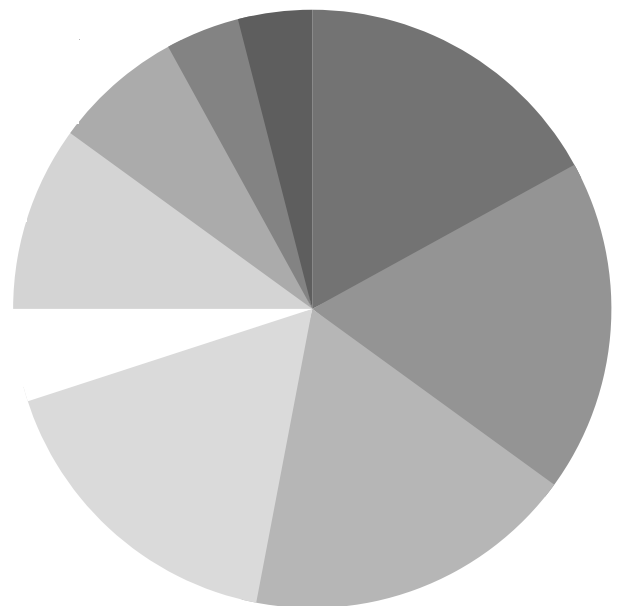
- 74% Donor Contribution (Community Impact)
- 24% Grant Revenue
- (-9%) Investment & Other Incomes
- 2% Donor Designated Contributions
- 8% Fundraising & Other Revenue
- <1% In-Kind Support & Bequests



\$1,347,244

Expenses:

- 18% Food Pantries
- 18% Supporting Vulnerable & Aging Population & Promoting Health & Wellness
- 17% Helping Children & Youth Succeed
- 17% Fundraising Campaign
- 5% Strengthening & Supporting Families & Promoting Self-Sufficiency
- 10% Grants
- 7% Management and General
- 4% Community Impact
- 4% Community Outreach Services



\$1,418,687

2022-2023 COMMUNITY IMPACT INVESTMENT

Emergency Food and Shelter Program

Comprised of local organizations as mandated by Congress, the United Way of the Laurel Highlands Food and Shelter Committee distributes funds from the Emergency Food and Shelter/FEMA grants and the Pennsylvania Department of Agriculture. The United Way of the Laurel Highlands is proud to be the administrator of this grant for Cambria County.

Agency	2022-2023 Funding
Windber Area Community Kitchen	\$654
Food for Families Food Bank	\$4,580
Catholic Charities	\$39,029
Victim Services	\$6,543
Community Action Partnership	\$9,814
Women's Help Center	\$3,500
Total	\$64,120

PA Department of Agriculture Grant Funding Distribution - 2022-2023

Food Pantries	2022-2023 Funding
St. Bernard Food Pantry	\$17,010
Cresson Food Pantry	\$5,487
Dorothy Day Center	\$7,729
Ebensburg SVDP Food Pantry	\$11,872
Forest Hills Emergency Food Pantry	\$5,741
Franklin Street United Methodist Church Pantry	\$13,654
Good Samaritan Food Pantry	\$8,697
Greater Johnstown Christian Fellowship Pantry	\$7,659
Interfaith Food Pantry	\$21,935
Moxham Food Pantry	\$12,030
Patton Food Pantry	\$21,821
Portage Area Food Pantry	\$11,806
South Fork Food Pantry	\$6,538
St. Andrew's Food Pantry	\$3,705
St. Clement's Food Pantry	\$6,670
Walnut Grove Emergency Food Bank	\$5,259
West End Food Pantry	\$11,018
Served Meals	
Family Kitchen	\$16,635
Salvation Army	\$6,040
Equipment Grant	\$11,945
Total	\$216,355

2022-2023 COMMUNITY IMPACT INVESTMENTS

Community Impact Investments

Community Impact Investments are the funds that each agency receives based upon the work of the Community Impact Committee. Allocation amounts are determined based upon agency site visits conducted in March, followed by volunteer evaluations of the programs in April. The table below illustrates how funding raised through the prior campaign, as well as grant procurement, makes an impact within the communities of both Cambria and Somerset Counties.

 *Funding for these agencies was supplemented through the UWLH Grant Writing Initiative.*

Program Investment	Program Delivered by	Investment
 Parents as Teachers	Beginnings, Inc.	\$80,000
Grant Writing Initiatives	United Way of the Laurel Highlands	\$76,345
Community Impact Initiatives	United Way of the Laurel Highlands	\$77,025
Community Outreach Services	United Way of the Laurel Highlands	\$58,791
Direct Services to Victims of Violent Crimes	Victim Services	\$50,000
Youth Drug & Alcohol Prevention	Cambria County Drug Coalition	\$40,000
Parents As Teachers	Family Center	\$34,000
Free Medical Clinic	Highlands Health	\$32,500
Youth Drug & Alcohol Prevention	Twin Lakes Center	\$30,000
Preschool Programming	Small Town Hope	\$26,000
Eviction Prevention Program	Women's Help Center	\$25,000
Early Care & Education Capacity	The Learning Lamp	\$25,000
Early Childhood Behavioral Intervention & Support	The Learning Lamp	\$25,000
Emergency Food & Shelter	United Way of the Laurel Highlands	\$24,371
Afterschool Programming	Flood City Youth Academy	\$20,000
PA 2-1-1	211 Southwest PA	\$15,225
Drop-In Center	Peer Empowerment Network	\$15,000
Homeless Shelter - Cambria	Catholic Charities	\$15,000
Emergency Financial Assistance	Catholic Charities	\$14,000
Girl Scouts Urban Setting	Girl Scouts	\$10,000
Homeless Shelter - Somerset	Next Step Center	\$10,000
Nurse-Family Partnership	Home Nursing Agency	\$10,000
Children's Vision Screening Program	Somerset County Blind Association	\$9,000
Sustainable Produce Program	Somerset County Mobile Food Bank	\$8,500
Power Hour	Boys & Girls Clubs	\$7,000
Grief Program	Victim Services	\$5,000
Heating Assistance	Salvation Army Somerset Service Center	\$3,500
 SNAP at the Market	United Way of the Laurel Highlands	\$1,923
Summer Camp	Salvation Army Johnstown	\$1,000
 UWLH Diaper Bank	United Way of the Laurel Highlands	\$835
Total Community Impact Investment	Partner Agency Allocations	\$750,015
Grant Writing Investment	Funding Secured for Community Programs/Projects	\$3,742,706
In-Kind Diaper Donations	Diaper Bank Inventory	\$12,574
TOTAL COMMUNITY INVESTMENT	Meeting Emerging and Priority Needs	\$4,505,295



A record \$50,000 raised

Women United of the Laurel Highlands hosted the annual fundraiser at 1st Summit Arena in 2022. There were more than 700 women in attendance, raising a record \$50,000 and more than 24,000 diapers for the UWLH's growing diaper bank.

The funding goes specifically to early childhood programs that are transformational, including Nurse-Family Partnership and Parents as Teachers.

The next Power of the Purse is scheduled for Sept. 7, 2023, at the 1st Summit Arena @ Cambria County War Memorial.

POWER
of the
Purse



[Click here for more news and photos from Power of the Purse](#)

DIAPER BANK

On average, about 1 in 3 families falls short by about 25 diapers each month, creating a barrier for parents to get their children into day care and preschool. This, in turn, creates a barrier to going to work. Our growing diaper bank network was developed to meet that emerging need. In about one year, the UWLH Diaper Bank has provided about 34,600 diapers to families in Cambria and Somerset Counties. **Plans in 2023 include developing strategies to eliminate transportation barriers for families to travel to the diaper bank.**



United Way
of the Laurel Highlands
Serving Cambria & Somerset Counties

OPERATION Diaper *Delivery*

Distribution points are located by school district in each county

ALL BANKS ARE OPEN 9 a.m. to 2 p.m.
the last Tuesday of each month for supplemental pickup.

CAMBRIA COUNTY DIAPER BANK LOCATIONS

Blacklick Valley SD
Cambria County Child Development Corp.
300 Prave Street, Suite 101
Ebensburg, PA 15931

Cambria Heights SD
Small Town Hope
2214 Bigler Ave.
N. Cambria, PA 15714

Central Cambria SD
Cambria County Child Development Corp.
300 Prave Street, Suite 101
Ebensburg, PA 15931

Conemaugh Valley SD
Beginnings
111 Market St.
Johnstown, PA 15901

Ferndale SD
Goodwill Southern Alleghenies Moxham Food Pantry Location
540 Central Ave.
Johnstown PA 15902

Forest Hills SD
The Learning Lamp
2025 Bedford Street
Johnstown, PA 15904

Glendale SD
Small Town Hope
2214 Bigler Ave.
N. Cambria, PA 15714

Greater Johnstown SD
15901 / 15905 / 15906
Beginnings, Inc.
111 Market St.,
Johnstown PA 15901
15902 / 15904 / 15905
Goodwill Southern Alleghenies, Moxham Food Pantry Location
540 Central Ave.,
Johnstown PA 15902

Northern Cambria SD
Small Town Hope
2214 Bigler Ave.
N. Cambria, PA 15714

Penn Cambria SD
Cambria County Child Development Corp.
300 Prave Street, Suite 101
Ebensburg, PA 15931

Portage SD
Portage Public Library
704 Main Street,
Portage, PA 15946
HOURS 12:30 TO 6:30 P.M.

Richland SD
The Learning Lamp
2025 Bedford Street
Johnstown, PA 15904

SOMERSET COUNTY DIAPER BANK LOCATIONS

ALL BANKS ARE OPEN 9 a.m. to 2 p.m.
the last Tuesday of each month.

Westmont SD
Goodwill Southern Alleghenies Moxham Food Pantry Location
540 Central Ave.
Johnstown PA 15902

Berlin, Confluence, Meyersdale, Salisbury & Turkeyfoot SD
Family Center
Salisbury Office
231 Ord Street,
Salisbury, PA 15558

Rockwood, Conemaugh Township, North Star & Somerset SD
Tableland
535 E. Main St., Ste. 1
Somerset, PA 15501

Shade Central City, Shanksville & Windber SD
Family Center
Central City Office
314 Central Ave.
Central City, PA 15926

EMERGENCY BANKS: Salvation Army Somerset Service Center is the Emergency Diaper Bank for Somerset County: 334 W. Main St., Somerset, PA 15501 - Open 9 a.m. to 3 p.m. Mon. to Fri.; YWCA is the Emergency Diaper Bank for Cambria County: 526 Somerset St., Johnstown, PA 15901 - Open 9a.m. to 4 p.m. Mon. to Fri.

ENDOWMENT & PLANNED GIVING

The United Way of the Laurel Highlands' Endowment and Planned Giving fund is a vessel for individuals determined to making lasting impact on the communities of Cambria and Somerset Counties. The fund has been built on a variety of gifts from long-time supporters of the United Way.

\$731,667 



THE WORK OF WOMEN UNITED

Women United - Women's Affinity Group

Women United was designed by the United Way Worldwide, is meant to showcase and display women's empowerment within the communities they live and work. Since 2017, Women United continues to grow in membership, and is comprised of local female executives, business owners, employees, and community advocates.

Women United® supports the core initiative areas of early childhood development and parental engagement. Their core mission is to help educate, engage, and empower families to excel. The women's affinity group promotes community leadership, interaction, communication, and provides fundraising support for the programs and services aligned with our goals.

The Power of the Purse event, hosted by the Women United®, is the United Way's top fundraising event. It has become a highly sought after event within the community. The event has grown significantly to host 700 people in attendance. The Power of the Purse event has raised more than \$170,000 in support of the United Way's top two core initiative areas.



1889 FOUNDATION INVESTMENT



The United Way of the Laurel Highlands is especially appreciative for a strong partnership with the 1889 Foundation. In 2022, the 1889 Foundation provided \$500,000 to advance UWLH's social change initiatives in Cambria and Somerset Counties. These funds were invested across Partner Agency programs to scale innovative approaches to solving some of the most challenging problems.

Together, we collaborate to improve community health, enhance food security, advance early learning initiatives, and create sustainable strategies for the well-being of our region.

As a regional leader, the 1889 Foundation's spirit of giving helped UWLH improve the well-being of more than 58,000 residents this past year.

BOARD OF DIRECTORS

Board Chair - **Jeffrey Wood**, *General Manager* - Kongsberg Protech Systems

Assistant Board Chair - **Dr. Jerry Zahorchak**, *Division Chair of Education (retired)* - University of Pittsburgh at Johnstown

Board Members: (in alphabetical descending order)

John Augustine

Administrative Director
Greater Johnstown Career &
Technology Center

Kim George

Staff Representative
AFSCME Council 83

Sharon L. Paterson

*Executive Officer & Assistant
Corporate Secretary*
Concurrent Technologies Corporation

Deb Barron

Vice President
NFP Corporation

Jim Huerth

President
AmeriServ Trust & Financial Services

Karen Remick

Administrative Director
Somerset County Technology Center

Alan Cashaw

President
NAACP

Dennis Hutchison

President
Somerset County Farm Bureau

Andy Rush

President
UPMC Somerset

Diane Chesnutwood

Human Resources Manager
NCDMM (National Center for Defense
Manufacturing and Machining)

Natalie Kurchak

Communications Officer
Community Foundation for the Alleghenies

Tracy Selak

Administrator
Cambria County Behavioral Health/
Intellectual Disabilities/Early Intervention
Program

Zachary Craig

Senior Vice President, Market Executive
F.N.B. Wealth Management

Brian Law

President
Prime Design Solutions

Pam Tokar-Ickes, Past Chair

Commissioner
Somerset County

Rev. Matthew Deal

Pastor
St. Paul's Church of Christ, Somerset

Sue Mann

President
1889 Foundation

Tim Walters

Sr. Vice President
AmeriServ Trust & Financial Services

Dr. Elizabeth Dunmore

Chief Medical Officer
Conemaugh Health System

Karen Mento, Treasurer

*Senior Vice President and Chief
Administrative Officer*
1st Summit Bank

Dr. Toni White

Director
Day Reporting Center for Cambria County
Adult Probation

Becky Flyte

General Manager
The Daily American

Melissa Musarra

Director of Human Resources
Utz Quality Foods/Snyder of Berlin

STAFF & OFFICE INFORMATION

Karen Struble Myers

President & CEO

Travis Hutzell

Director of Grant & Resource Development

Rick Kazmer

*Community Relationship & Marketing
Manager*

Paula Gojmerac

*Community Impact Manager & Officer
Manager*

Karen Shaw

Administrative Coordinator

Mickie Cooper

Accountant

Main Office:

422 Main Street, Suite 203
Johnstown, PA 15901
(814) 535-2563

Email: Admin@uwlaurel.org

Somerset Office:

218 N. Kimberly Avenue, Suite 204
Somerset, PA 15501

MESSAGE FROM LEADERSHIP



Jeffrey Wood
Board Chairman



Karen Struble Myers
President & CEO

The past several years have emphasized the importance of connectivity. Whether it is internet broadband, access to resources, or a compassionate voice and listening ear, the need is great.

While the significance of connectedness is more pronounced than ever, it has always been at the core of the United Way of the Laurel Highlands' mission. We engage caring people to improve lives and build a stronger community. Even more, we are creating opportunities for vulnerable families and individuals to thrive, which, in turn, helps all of our families, neighborhoods, and businesses flourish. We live United for All.

Programs are made possible by many wonderful donors, volunteers, partners, and leaders who come together with United Way to ensure that children build a strong foundation for the future, that parents have the tools they need to support their child's healthy development, that youth build resiliency skills to avoid substance abuse, and that those in crisis have the support and resources they need to overcome difficult challenges. Through your generosity, we continued to fund our programs at pre-pandemic levels. Even as we celebrate the more than 58,000 lives your investment helped us improve, we know that an average of 32% of ALICE families, which stands for Asset Limited Income Constrained Employed, struggle to afford the essentials. Uplifting those families is one of the many reasons we developed a regional Diaper Bank.

In August of 2022, we completed a new Community Health Needs Assessment with our partners at Conemaugh Health System, the 1889 Foundation, and the 1889 Jefferson Center for Population Health. While the report was affirming of our investments in young children, families, and youth drug and alcohol prevention, we know there is still progress to be made to improve education, health, and well-being in Cambria and Somerset Counties. Together with you, we can tackle our region's toughest obstacles.

Ultimately, connectedness is what gives all of us a feeling of belonging. United, we are part of something larger. Together, we weave together a rich fabric of caring that fosters kindness, economic stability, learning, meaningful social interactions, improved physical and mental health, and decreased health risks.

United, connected, and strong, we look forward to many more years of service to our region.

Thank you for all you do to empower our neighbors across the Laurel Highlands.

Warmest regards,

Jeffrey Wood
Board Chairman

Karen Struble Myers, CFRE
President & CEO



United Way
of the Laurel Highlands
Serving Cambria & Somerset Counties